

CATALOG



The smart way to enjoy your travels.



The smart way to enjoy your travels.



INDEX



ROOF RACKS

6-27



ROOF RAILS

28-41



ROOF BOXES

42-49



SIDE STEPS

50-75

ABOUT OUR BRANDS

PAGE 04

ROOF TYPES

PAGE 08

PRODUCTION & ENGINEERING

PAGE 76

GALLERY

PAGE 78

CONTACT

PAGE 82



As Can Automotive, together with our two brands; We are proud to market our products which we designed with the technological innovations and engineering methods brought by our age, to more than 40 countries, with our side step, roof rail, roof rack and roof box models.

We have touched the thousands of vehicles our customers have and accompanied their adventures in the automotive industry since 1980 and in the accessory industry since 1991.

We protect the green world and design products that will not harm it, together with our strong collaborations and reliable suppliers that we have established in a global framework. We want you to know that traveling with you on the miles you have discovered over the years is a great source of pride for us.

OUR MISSION

Our biggest target is to reach the market leader position in the automotive accessories industry, together with our business partners with whom we cooperate around the world.

One of our biggest goals is to be a structure that shapes the sector with our design capabilities and ideals, and to support the sales and marketing activities of our business partners.





OUR VISION

One of the biggest motivations for us is to provide confidence to our customers with our secure and wide business partner network, which we have established as a result of many years of efforts, with our parts and service support, wherever you are in the world.



Turtle aims to be a strong and dynamic family with its customers in more than 40 countries around the world. It brings customer satisfaction to the forefront with its globally reliable and industry leading suppliers. It aims to provide an innovative and reliable service from Turkey to the world with its strong R&D team, innovative designs and technological infrastructure.

+ ROOF RACKS



When the cars need extra luggage or they can carry long or wide items that do not fit in the vehicle trunk, the roof rails provide extra luggage volume where you can attach your accessories such as skis, snowboards, bike carriers, roof boxes on the roof of your car.



Turtle Air 1



Turtle Air 2



Turtle Air 3



Turtle Air 3 PR.



Turtle Air 4



Shark



Diamond

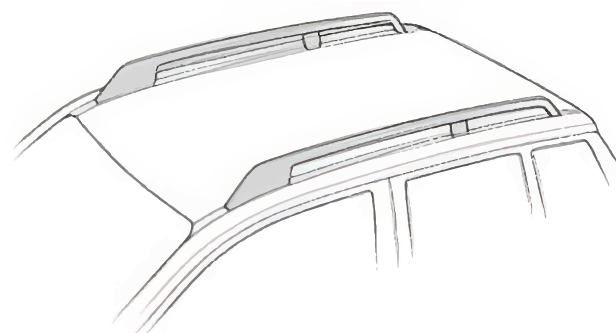


Tourmaline v1



Tourmaline v2



**Roof Rails**

Turtle Air I



Diamond



Shark



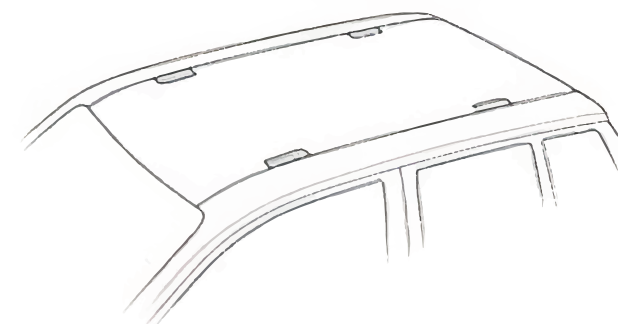
Tourmaline v1

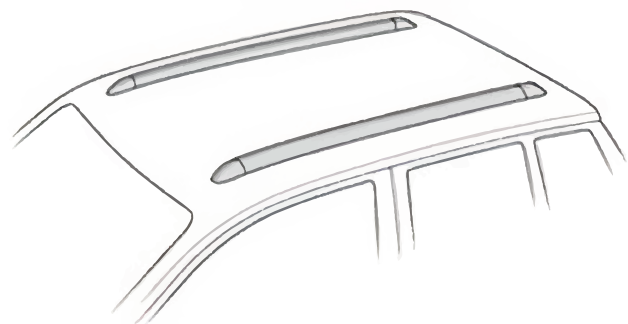


Turtle Air III



Turtle Air III PR

**Fixed Points**



Flush Rails

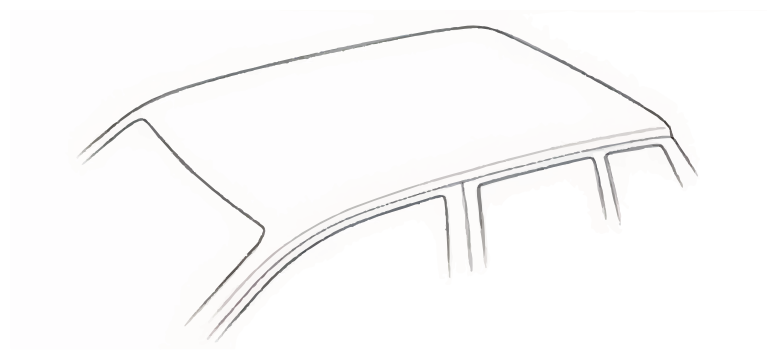
Turtle Air II



Tourmaline v2



Turtle Air 4



Normal Roof

Advantages

- + Quiet
- + Lockable
- + Robust
- + Long Life
- + Easy Installation
- + Material Quality
- + T-bolt compatible
- + Aluminum Bars

FUNCTIONAL



+ TURTLE AIR 1

AIR 1

ROOF RACK

It is your best companion on your long trips with 2 different color options.

2022 COLLECTION

AESTHETIC COMES FIRST



11 + TURTLE AIR 1



SILVER GRAY



BLACK

OPTIONS

Advantages

- + Quiet
- + Lockable
- + Robust
- + Long Life
- + Easy Installation
- + Material Quality
- + T-bolt compatible
- + Aluminum Bars

FUNCTIONAL



+ TURTLE AIR 2

AIR 2

ROOF RACK

It is more than an accessory specially designed for your vehicle with its fully lockable function, with two different color

AESTHETIC COMES FIRST



13

+ TURTLE AIR 2



SILVER GRAY



BLACK

OPTIONS

Advantages

- + Quiet
- + Lockable
- + Robust
- + Long Life
- + Easy Installation
- + Material Quality
- + T-bolt compatible
- + Aluminum Bars

FUNCTIONAL



+ TURTLE AIR 3

AIR 3

ROOF RACK

A functional design that has proven itself in terms of durability and longevity with two different color options.

AESTHETIC COMES FIRST



15

+ TURTLE AIR 3



SILVER GRAY



BLACK

OPTIONS

Advantages

- + Quiet
- + Lockable
- + Robust
- + Long Life
- + Easy Installation
- + Material Quality
- + T-bolt compatible
- + Aluminum Bars

FUNCTIONAL



+ TURTLE AIR 3 PR

AIR 3 PREMIUM

ROOF RACK

It is a unique accessory where you will experience the premium feeling to its peaks with its two different color options and anodized aluminum structure.

AESTHETIC COMES FIRST



17

+ TURTLE AIR 3 PR



SILVER GRAY



BLACK

OPTIONS

Advantages

- + Quiet
- + Lockable
- + Robust
- + Long Life
- + Easy Installation
- + Material Quality
- + T-bolt compatible
- + Aluminum Bars

FUNCTIONAL



+ TURTLE AIR 4

AIR 4

ROOF RACK

A unique accessory with its aerodynamic design and unique appearance, using the possibilities offered by technology to the fullest, with 2 different color options.

AESTHETIC COMES FIRST



+ TURTLE AIR 4



SILVER GRAY



BLACK

OPTIONS

Advantages

- + Quiet
- + Lockable
- + Robust
- + Long Life
- + Easy Installation
- + Material Quality
- + T-bolt compatible
- + Aluminum Bars

FUNCTIONAL

**+ SHARK****SHARK****ROOF RACK**

With 2 different color options, its long-lasting and durable structure offers its users a unique experience.

2022 COLLECTION

AESTHETIC COMES FIRST



21

+ SHARK



SILVER GRAY



BLACK

OPTIONS

Advantages

- + Quiet
- + Robust
- + Long Life
- + Easy Installation
- + Material Quality
- + T-bolt compatible
- + Aluminum Bars

FUNCTIONAL

**+ DIAMOND****DIAMOND**

ROOF RACK

With two different color options, you can carry your belongings with peace of mind thanks to its fully dockable system.

AESTHETIC COMES FIRST



23

+ DIAMOND



SILVER GRAY



BLACK

OPTIONS

Advantages

- + Quiet
- + Lockable
- + Robust
- + Long Life
- + Easy Installation
- + Material Quality
- + T-bolt compatible
- + Aluminum Bars

FUNCTIONAL



+ TOURMALINE V1

TOURMALINE V1

ROOF RACK

In addition to its functional design with two different color options; The model, which offers a visual aesthetic, is the new favorite of users.

AESTHETIC COMES FIRST



+ TOURMALINE V1



SILVER GRAY



BLACK

OPTIONS

Advantages

- + Quiet
- + Lockable
- + Robust
- + Long Life
- + Easy Installation
- + Material Quality
- + T-bolt compatible
- + Aluminum Bars

FUNCTIONAL



+ TOURMALINE V2

TOURMALINE V2

ROOF RACK

The re-design lines with 2 different color options received full marks from the users.

AESTHETIC COMES FIRST



+ TOURMALINE V2



SILVER GRAY



BLACK

OPTIONS

+ ROOF RAILS



Roof rails, which are an example of the perfect harmony of functionality and visual aesthetics, are used as mounting points as well as carriers.

It offers the option of attaching items that will not fit in your car to the roof, making your vehicle look unique and special while providing aerodynamic benefits.



CROWN



GOLD



HAWK



EAGLE



FALCON



FALCON-A



Advantages

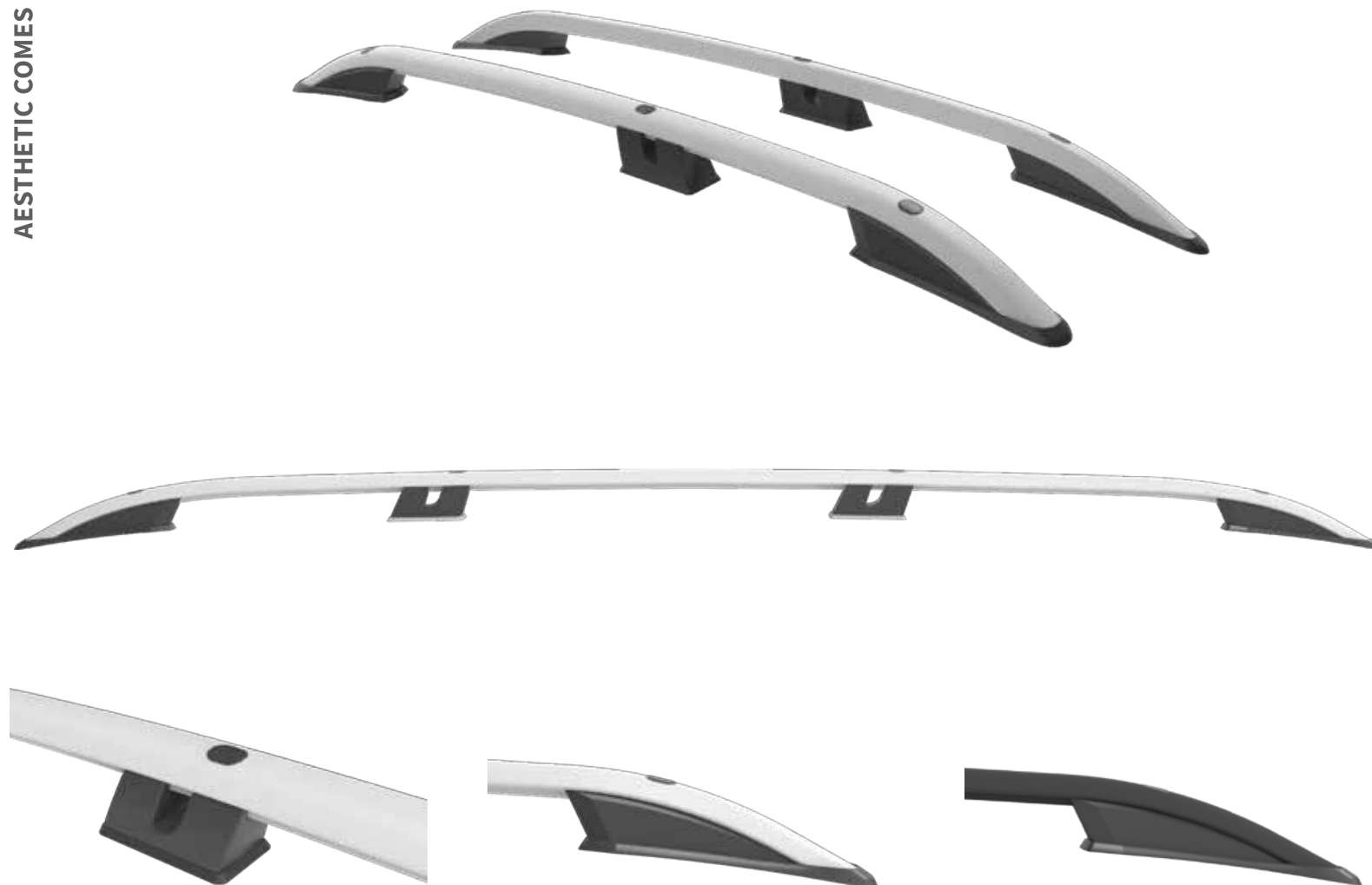
- + Quiet
- + Robust
- + Long Life
- + Easy Installation
- + Material Quality
- + T-bolt compatible
- + Aluminum Bars

STRONG**+ CROWN****CROWN**

ROOF RAIL

Crown is the new favorite of those who want to carry adventure and hobby accessories.

AESTHETIC COMES FIRST



31

+ CROWN



SILVER GRAY



BLACK

OPTIONS

Advantages

- + Quiet
- + Robust
- + Long Life
- + Easy Installation
- + Material Quality
- + T-bolt compatible
- + Aluminum Bars

STRONG

**+ GOLD****GOLD**

ROOF RAIL

Standing out with its silence and easy installation, Gold got full marks from its users.

+ GOLD

AESTHETIC COMES FIRST



OPTIONS



SILVER GRAY

BLACK

Advantages

- + Quiet
- + Robust
- + Long Life
- + Easy Installation
- + Material Quality
- + T-bolt compatible
- + Aluminum Bars

STRONG

**+ HAWK****HAWK**

ROOF RAIL

Hawk is designed for durability and functionality for your car with its aluminum bars and lockable structure.

2022 COLLECTION

AESTHETIC COMES FIRST

35

+ HAWK



OPTIONS



SILVER GRAY



BLACK

Advantages

- + Quiet
- + Robust
- + Long Life
- + Easy Installation
- + Material Quality
- + T-bolt compatible
- + Aluminum Bars

STRONG

**+ EAGLE****EAGLE**

ROOF RAIL

Its visibility is in the foreground, it does not harm your car, it is resistant to hot and cold weather, Unique design that protects your car against ultraviolet rays.



OPTIONS



SILVER GRAY

Advantages

- + Quiet
- + Robust
- + Long Life
- + Easy Installation
- + Material Quality
- + T-bolt compatible
- + Aluminum Bars

STRONG

**+ FALCON****FALCON**

ROOF RAIL

Getting full marks for its easy installation and material quality, Falcon will be your car's greatest companion.

AESTHETIC COMES FIRST



OPTIONS



SILVER GRAY



BLACK

Advantages

- + Quiet
- + Robust
- + Long Life
- + Easy Installation
- + Material Quality
- + T-bolt compatible
- + Aluminum Bars

STRONG



+ FALCON-A

FALCON-A

ROOF RAIL

A unique design that is visually in the foreground, does not harm your vehicle, is resistant to hot and cold weather, and protects your vehicle against ultraviolet rays.

AESTHETIC COMES FIRST



41

+ FALCON-A



SILVER GRAY



BLACK

OPTIONS

+ ROOF BOXES



Roof boxes that you can choose for your large, wide, delicate or small items with heavy luggage capacity when going on a long or short trip; While it offers options suitable for the model, shape and budget of your car with the different produced volume sizes it offers, while keeping your belongings safely and comfortably from sun, rain water and weather conditions such as strong wind, while providing a nice comfort to you and your belongings along the way, by carrying a lot of goods.



TIROL 420



EVO SPACE



ECO SPACE



Technical Specifications

- + Size: 211x92x38 cm
- + Weight : 26 kg
- + External Volume: 740 lt.
- + Internal Volume: 420 lt.
- + Material : ABS (5mm thick)

Advantages

- + Effortless Double-Sided On-Off Feature
- + 6 Point Lock
- + T-Bolt Compatible
- + Resistant to UV Rays
- + Reinforced Front Nose Support

SILENT



+ TIROL 420



TIROL 420

ROOF BOX

Carry your belongings that do not fit in your vehicle safely with 2 different color options.

2022 COLLECTION

AERODYNAMIC STRUCTURE



45

+ TIROL 420



WHITE



GLOSSY BLACK

OPTIONS

Technical Specifications

- + Size: 197x73x39 cm
- + Weight : 18 kg
- + External Volume: 560 lt.
- + Internal Volume: 310 lt.
- + Material : ABS (5mm thick)

Advantages

- + Effortless Double-Sided On-Off Feature
- + 6 Point Lock
- + U Clamp Connection
- + Resistant to UV Rays

SILENT



+ EVO SPACE

EVO SPACE

ROOF BOX

A unique companion for your long journeys.



WHITE



CARBON



BLACK

OPTIONS

Technical Specifications

- + Size: 197x73x39 cm
- + Weight : 17 kg
- + External Volume: 560 lt.
- + Internal Volume: 310 lt.
- + Material : ABS
(The bottom pool is 5mm thick, the top cover is 4mm thick)

Advantages

- + One Side Opening and Closing
- + 3 Point Lock
- + U Clamp Connection
- + Resistant to UV Rays

SILENT



+ ECO SPACE

ECO SPACE

ROOF BOX

Eco Space, which will add elegance and functionality to your vehicle with its carbon-fiber structure; It has already got full marks from its users.

AERODYNAMIC STRUCTURE



OPTIONS



ANTHRACITE

+ SIDE STEPS



In addition to visual aesthetics, functionally side steps; It absorbs the impact by preventing the vehicle from hitting hard materials such as rocks and stones on road slopes. In addition, it ensure an ergonomic climbing experience.



PLUS



BRILLIANT



ONIX



ALYANS



SAPPHIRE V1



SAPPHIRE V2



EMERALD



RING



PEARL



ERA V1



ERA V2



ANOTHER



Advantages

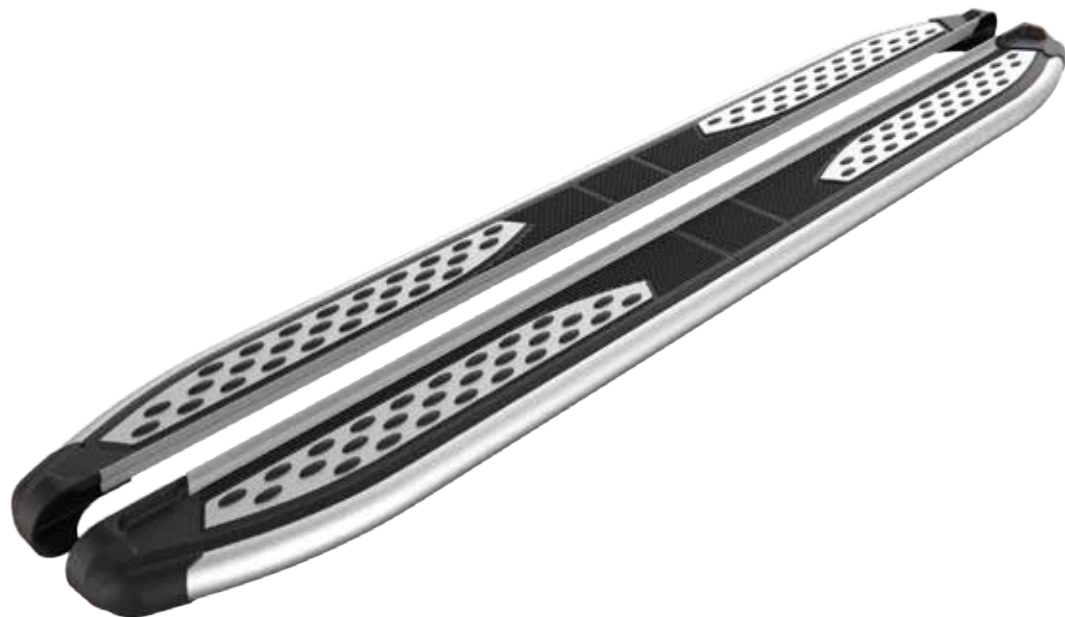
- + Quiet
- + Robust
- + Long Life
- + Easy Installation
- + Material Quality
- + Aluminum Bars

DURABLE**+ PLUS****PLUS****SIDE STEP**

The accessory, which offers an ergonomic ascend a sidestep experience, has been specially designed for your vehicle.

2022 COLLECTION

FOR YOUR LONG JOURNEYS



53

+ PLUS



CHROME



BLACK



SILVER GRAY

OPTIONS

Advantages

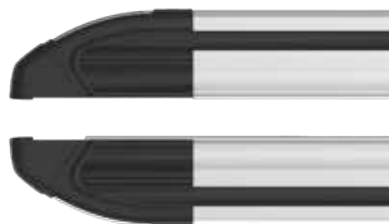
- + Quiet
- + Robust
- + Long Life
- + Easy Installation
- + Material Quality
- + Aluminum Bars

DURABLE

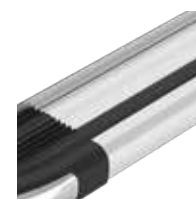
**+ BRILLIANT****BRILLIANT****SIDE STEP**

In addition to the ergonomic pressing experience, ensure the safety of your car in the best way with its shock absorption feature.

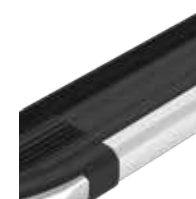
FOR YOUR LONG JOURNEYS



+ BRILLIANT



WHITE



BLACK

OPTIONS

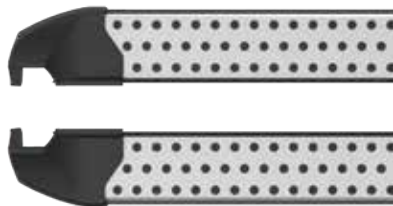
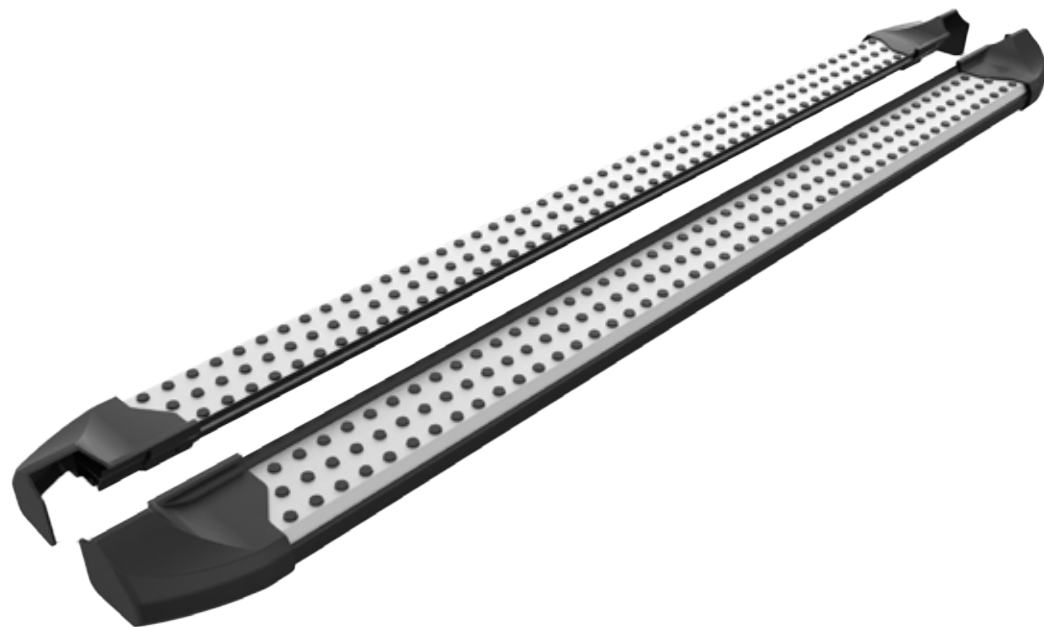
Advantages

- + Quiet
- + Robust
- + Long Life
- + Easy Installation
- + Material Quality
- + Aluminum Bars

DURABLE**+ ONIX****ONIX****SIDE STEP**

In addition to functionality, give your vehicle the look it deserves with its aesthetic stance.

FOR YOUR LONG JOURNEYS



BLACK



SILVER GRAY

OPTIONS

Advantages

- + Quiet
- + Robust
- + Long Life
- + Easy Installation
- + Material Quality
- + Aluminum Bars

DURABLE**+ ALYANS**

ALYANS**SIDE STEP**

Get an ergonomic pressing experience by protecting your vehicle against impacts with its strong and durable structure.

2022 COLLECTION

FOR YOUR LONG JOURNEYS



59

+ ALYANS

OPTIONS



BLACK



SILVER GRAY

Advantages

- + Quiet
- + Robust
- + Long Life
- + Easy Installation
- + Material Quality
- + Aluminum Bars

DURABLE

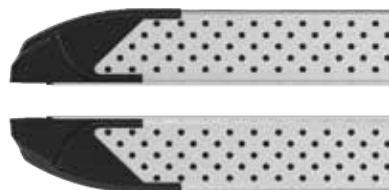
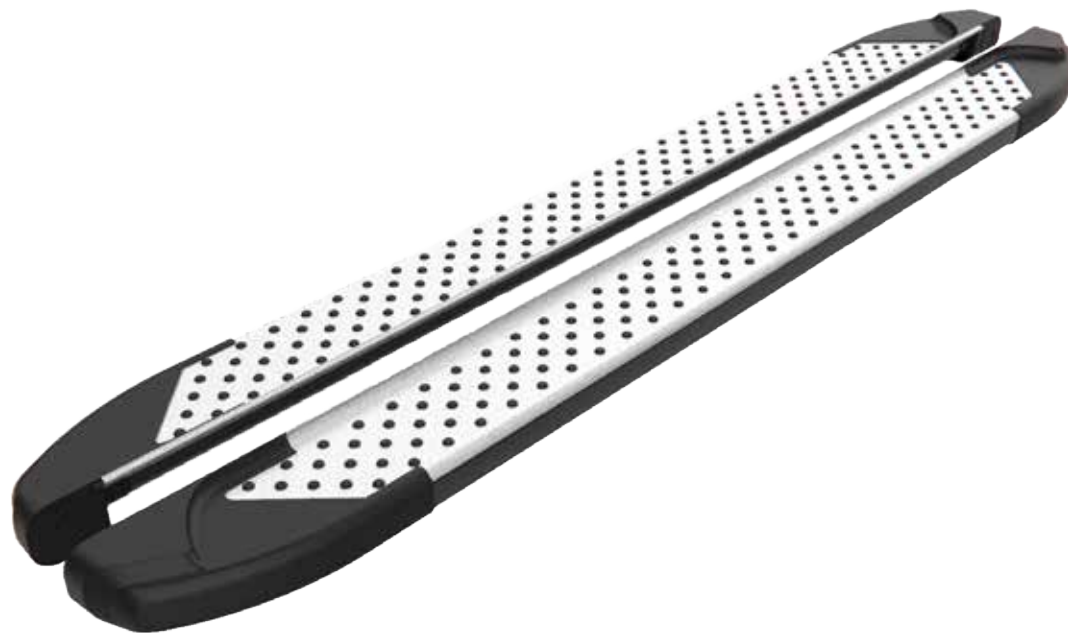
+ SAPPHIRE V1

SAPPHIRE V1**SIDE STEP**

It is much more than an accessory with its marvelous textured structure.

2022 COLLECTION

FOR YOUR LONG JOURNEYS

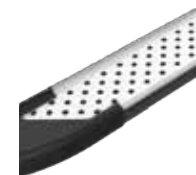


61

+SAPPHIRE V1



BLACK



SILVER GRAY

OPTIONS

Advantages

- + Quiet
- + Robust
- + Long Life
- + Easy Installation
- + Material Quality
- + Aluminum Bars

DURABLE

+ SAPPHIRE V2

SAPPHIRE V2**SIDE STEP**

It is designed to bring the visuality of your vehicle to the forefront by obtaining an ergonomic pressing experience.

FOR YOUR LONG JOURNEYS



WHITE



BLACK

OPTIONS

Advantages

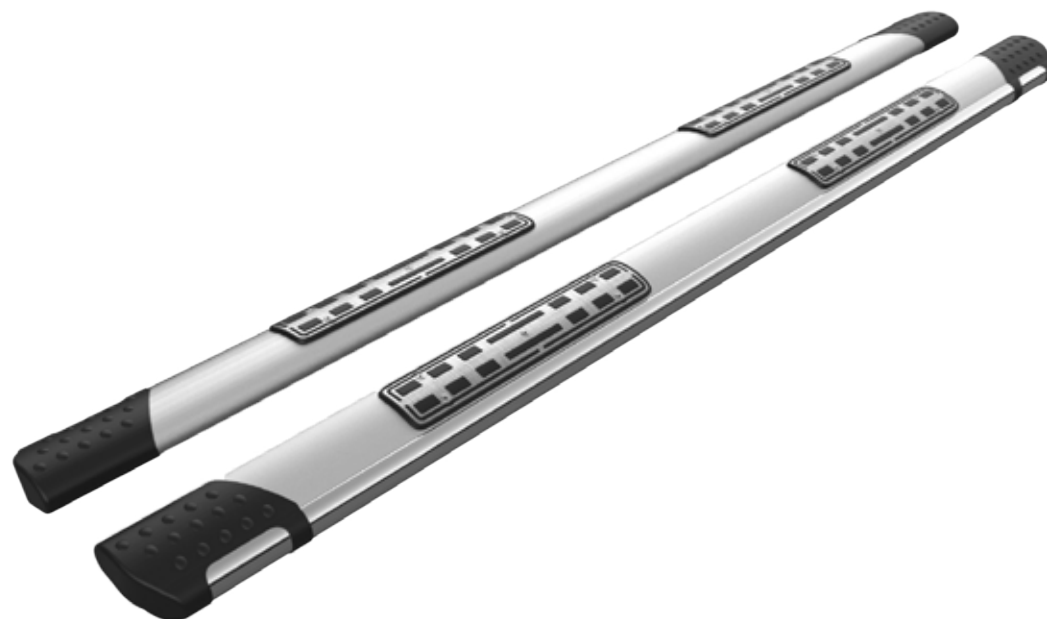
- + Quiet
- + Robust
- + Long Life
- + Easy Installation
- + Material Quality
- + Aluminum Bars

DURABLE**+ EMERALD**

EMERALD**SIDE STEP**

This product, which is a wonder of design with its structure that protects against impacts, is the new favorite of users.

FOR YOUR LONG JOURNEYS



+ EMERALD



BLACK



SILVER GRAY

OPTIONS

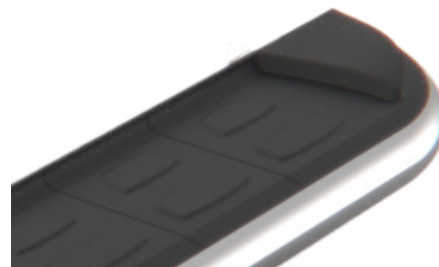
Advantages

- + Quiet
- + Robust
- + Long Life
- + Easy Installation
- + Material Quality
- + Aluminum Bars

DURABLE**+ RING****RING****SIDE STEP**

Highlight the visibility of your car with its durability and quality structure.

FOR YOUR LONG JOURNEYS



OPTIONS



SILVER GRAY

Advantages

- + Quiet
- + Robust
- + Long Life
- + Easy Installation
- + Material Quality
- + Aluminum Bars

DURABLE**+ PEARL**

PEARL**SIDE STEP**

Get an ergonomic pressing experience by protecting your car against impacts with its strong and durable structure.

FOR YOUR LONG JOURNEYS



69

+ PEARL



KROM



BLACK



SILVER GRAY

OPTIONS

Advantages

- + Quiet
- + Robust
- + Long Life
- + Easy Installation
- + Material Quality
- + Aluminum Bars

DURABLE

**+ ERA V1**

ERA V1**SIDE STEP**

The accessory, which offers an ergonomic pressing experience, has been specially designed for your car.

2022 COLLECTION

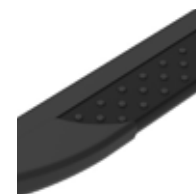
FOR YOUR LONG JOURNEYS



71

+ ERA V1

OPTIONS



BLACK



SILVER GRAY

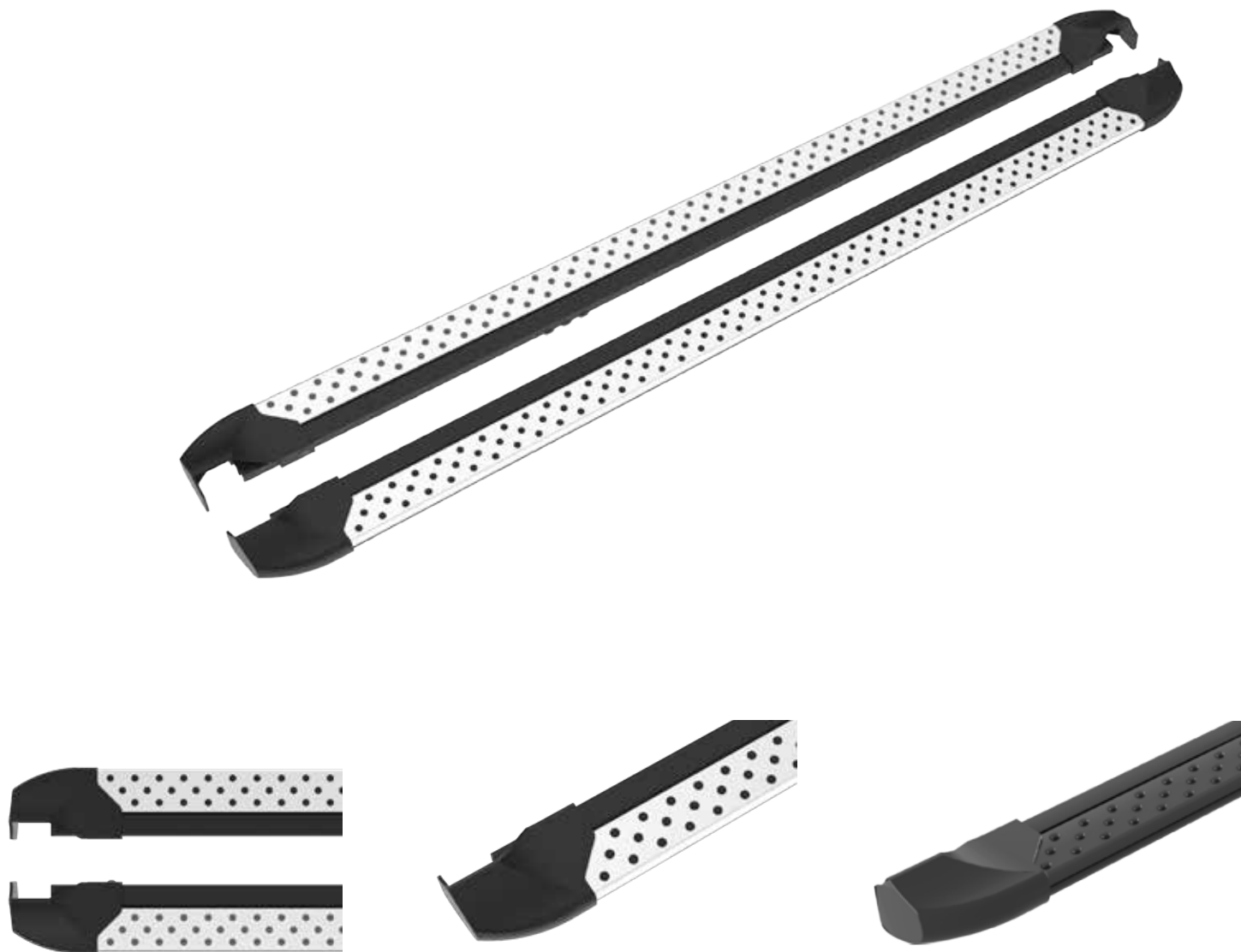
Advantages

- + Quiet
- + Robust
- + Long Life
- + Easy Installation
- + Material Quality
- + Aluminum Bars

DURABLE**+ ERA V2****ERA V2****SIDE STEP**

It is much more than an accessory with its marvelous textured structure.

FOR YOUR LONG JOURNEYS



73

+ ERA V2

OPTIONS



BLACK



SILVER GRAY

Advantages

- + Quiet
- + Robust
- + Long Life
- + Easy Installation
- + Material Quality
- + Aluminum Bars

DURABLE**+ ANOTHER****ANOTHER****SIDE STEP**

Highlight the visuality of your car with its durability and quality structure.

2022 COLLECTION

FOR YOUR LONG JOURNEYS



75

+ ANOTHER



BLACK



SILVER GRAY

OPTIONS



04



PRODUCTION

We use working methods such as lean production methods, poka-yoke, 5S, kaizen, and total quality management. With our robot-assisted production line, we can coordinate the whole process in our facility and complete the production. Our company, which has been continuing its infrastructure works for a long time; As of 2022, it will complete the Industry 4.0 steps and then continue its activities stronger with cloud systems and artificial intelligence supported production method.

05



QUALITY

All the quality tests and documents required by the industry have been provided, and our main goal is to be a team that produces quality, not quality control. The quality tests of our products, which have successfully passed the test centers that have been approved in Europe -especially in Germany and Poland- and the world, will be carried out in our quality laboratory, which will be located within our structure, as of 2022.

06



SUPPORT

Along with the technical support we provide all over the world, we are always with our users and business partners in parts support and supply when necessary.









**Contact Us:****Address:**

Veliköy O.S.B. 4.Cad. No:20/A
Çerkezköy / TEKİRDAĞ

Phone:

+90 282 746 13 20

Mail:

info@canotomotiv.com.tr





Contact Us:

Address:

Veliköy O.S.B. 4.Cad. No:20/A
Çerkezköy / TEKİRDAĞ

Phone:

+90 282 746 13 20

Mail:

info@canotomotiv.com.tr



Scan Me!



M: info@canotomotiv.com.tr

Veliköy O.S.B. 4.Cad. No:20/A Çerkezköy/Tekirdağ

T: +90 282 746 13 20